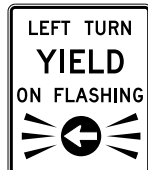
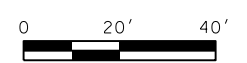
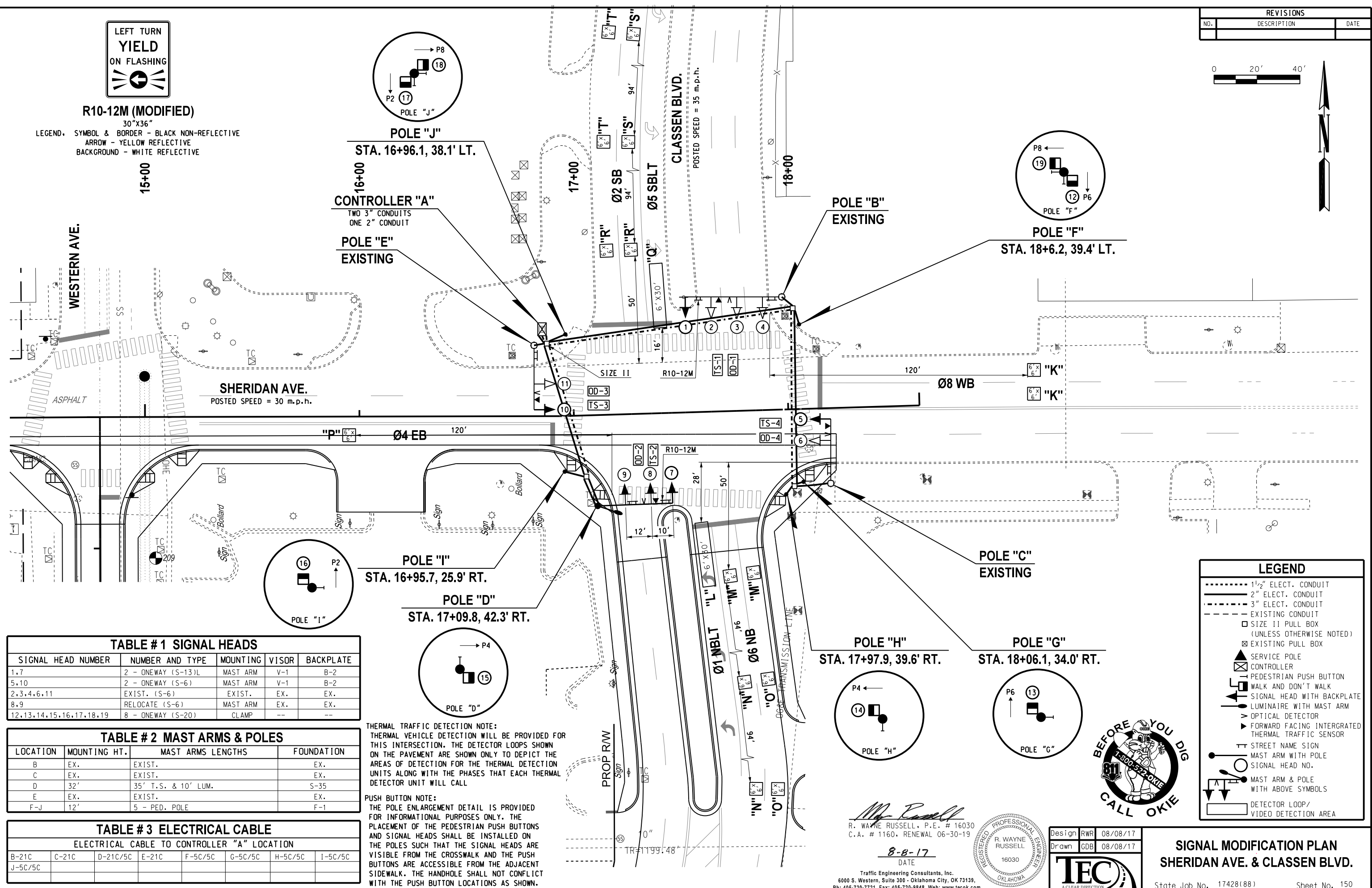


REVISIONS		
NO.	DESCRIPTION	DATE



R10-12M (MODIFIED)
30"x36"

LEGEND. SYMBOL & BORDER - BLACK NON-REFLECTIVE
ARROW - YELLOW REFLECTIVE
BACKGROUND - WHITE REFLECTIVE



15+00
16+00
17+00
18+00

WESTERN AVE.

SHERIDAN AVE.
POSTED SPEED = 30 m.p.h.

CLASSEN BLVD.
POSTED SPEED = 35 m.p.h.

POLE "F"
STA. 18+6.2, 39.4' LT.

POLE "J"
STA. 16+96.1, 38.1' LT.

CONTROLLER "A"
TWO 3" CONDUITS
ONE 2" CONDUIT

POLE "E"
EXISTING

POLE "B"
EXISTING

POLE "I"
STA. 16+95.7, 25.9' RT.

POLE "D"
STA. 17+09.8, 42.3' RT.

POLE "C"
EXISTING

POLE "H"
STA. 17+97.9, 39.6' RT.

POLE "G"
STA. 18+06.1, 34.0' RT.

TABLE # 1 SIGNAL HEADS

SIGNAL HEAD NUMBER	NUMBER AND TYPE	MOUNTING	VISOR	BACKPLATE
1,7	2 - ONEWAY (S-13)L	MAST ARM	V-1	B-2
5,10	2 - ONEWAY (S-6)	MAST ARM	V-1	B-2
2,3,4,6,11	EXIST. (S-6)	EXIST.	EX.	EX.
8,9	RELOCATE (S-6)	MAST ARM	EX.	EX.
12,13,14,15,16,17,18,19	8 - ONEWAY (S-20)	CLAMP	--	--

TABLE # 2 MAST ARMS & POLES

LOCATION	MOUNTING HT.	MAST ARMS LENGTHS	FOUNDATION
B	EX.	EXIST.	EX.
C	EX.	EXIST.	EX.
D	32'	35' T.S. & 10' LUM.	S-35
E	EX.	EXIST.	EX.
F-J	12'	5 - PED. POLE	F-1

TABLE # 3 ELECTRICAL CABLE

ELECTRICAL CABLE TO CONTROLLER "A" LOCATION							
B-21C	C-21C	D-21C/5C	E-21C	F-5C/5C	G-5C/5C	H-5C/5C	I-5C/5C
J-5C/5C							

THERMAL TRAFFIC DETECTION NOTE:
THERMAL VEHICLE DETECTION WILL BE PROVIDED FOR THIS INTERSECTION. THE DETECTOR LOOPS SHOWN ON THE PAVEMENT ARE SHOWN ONLY TO DEPICT THE AREAS OF DETECTION FOR THE THERMAL DETECTION UNITS ALONG WITH THE PHASES THAT EACH THERMAL DETECTOR UNIT WILL CALL

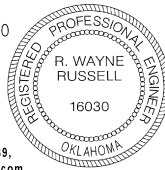
PUSH BUTTON NOTE:
THE POLE ENLARGEMENT DETAIL IS PROVIDED FOR INFORMATIONAL PURPOSES ONLY. THE PLACEMENT OF THE PEDESTRIAN PUSH BUTTONS AND SIGNAL HEADS SHALL BE INSTALLED ON THE POLES SUCH THAT THE SIGNAL HEADS ARE VISIBLE FROM THE CROSSWALK AND THE PUSH BUTTONS ARE ACCESSIBLE FROM THE ADJACENT SIDEWALK. THE HANDHOLE SHALL NOT CONFLICT WITH THE PUSH BUTTON LOCATIONS AS SHOWN.

LEGEND

- 1/2" ELECT. CONDUIT
- 2" ELECT. CONDUIT
- 3" ELECT. CONDUIT
- EXISTING CONDUIT
- SIZE 11 PULL BOX (UNLESS OTHERWISE NOTED)
- EXISTING PULL BOX
- SERVICE POLE
- CONTROLLER
- PEDESTRIAN PUSH BUTTON
- WALK AND DON'T WALK
- SIGNAL HEAD WITH BACKPLATE
- LUMINAIRE WITH MAST ARM
- OPTICAL DETECTOR
- FORWARD FACING INTEGRATED THERMAL TRAFFIC SENSOR
- STREET NAME SIGN
- MAST ARM WITH POLE
- SIGNAL HEAD NO.
- MAST ARM & POLE WITH ABOVE SYMBOLS
- DETECTOR LOOP/VIDEO DETECTION AREA



R. Wayne Russell
R. WAYNE RUSSELL, P.E. # 16030
C.A. # 1160, RENEWAL 06-30-19



Design	RWR	08/08/17
Drawn	GDB	08/08/17



SIGNAL MODIFICATION PLAN
SHERIDAN AVE. & CLASSEN BLVD.

State Job No. 17428(88) Sheet No. 150

08/08/17 G:\OP\Projects\17428A_Downtown Blvd WP 5.B Task 5\CAD\SHERIDAN & CLASSEN SIG MOD.dgn